

©Maarten Boersema

# FIND AND TREAT ALL MISSING PERSONS WITH TB

KNCV Tuberculosis Foundation has developed a “Find and Treat all Missing Persons with TB” (FTMP) strategy with an Operational Guide that defines a practical district level approach to find, diagnose, and treat people with tuberculosis (TB) who are at risk of acquiring TB and who are missed by formal and informal health systems. It will guide high TB-burden countries to assess and understand their

district level epidemic and health- & community systems. They can then develop, implement, and assess the impact of FTMP interventions. This will contribute to countries’ capacities to implement their FTMP approach in a standardized and measurable way that takes into account the country context, along with the health needs of affected individuals and patients.

## BACKGROUND

In 2016, the World Health Organization estimated that close to 40% of tuberculosis (TB) patients were “missing”. This translates to approximately 4 million people with TB for whom it is not known if they have ever received a diagnosis or appropriate treatment. To end the TB epidemic, it is necessary to find, diagnose and treat these missing patients.

## FTMP FRAMEWORK

### Vision

A world free of tuberculosis

### Mission

Find all missing persons with TB and ensure access to quality care

### Prioritize implementation areas



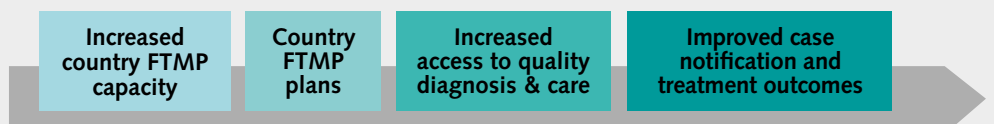
### Stages



### Guiding principles

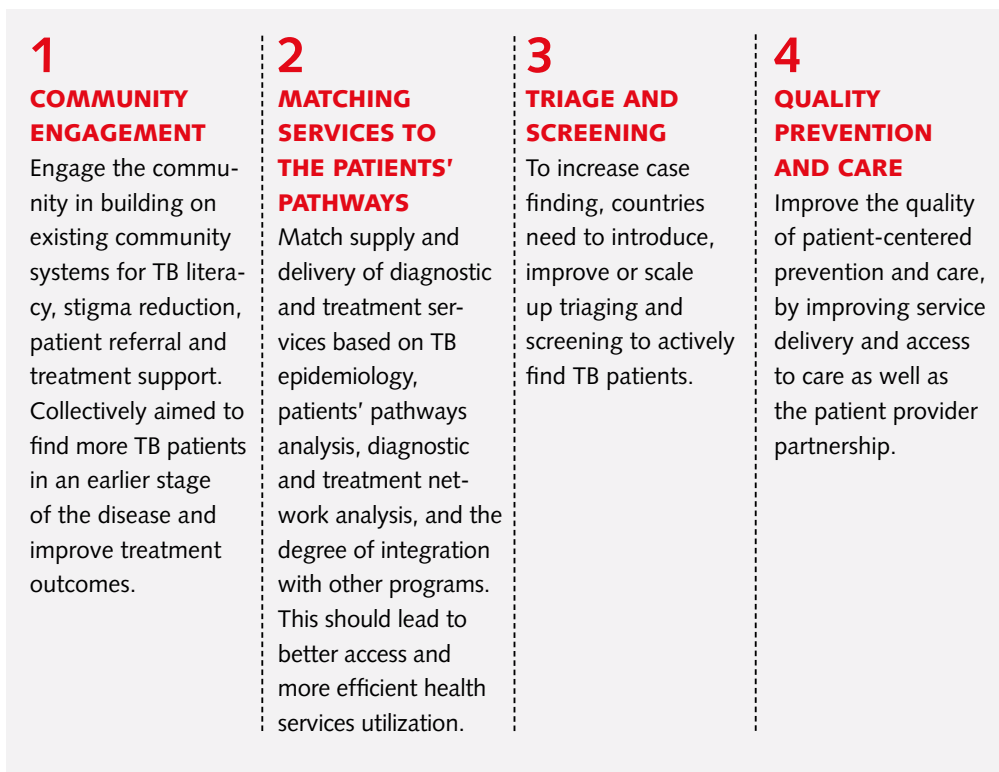
Programmatic and integrated, patient-centered, and evidence based

### Results



# Implementation areas

The FTMP approach includes four implementation areas where interventions will be focused:

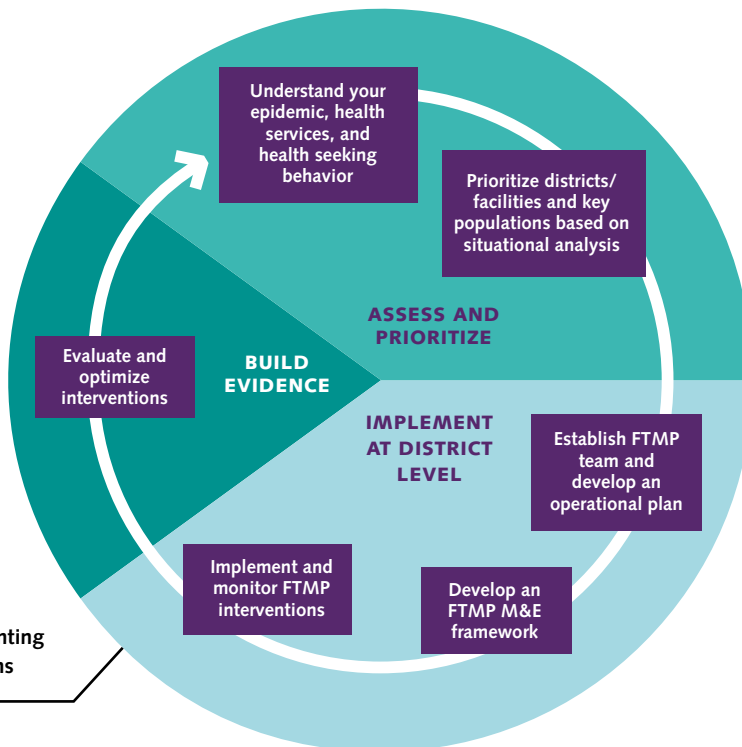


## FTMP GUIDING PRINCIPLES:

- **Programmatic and Integrated**  
FTMP interventions are aligned with countries' TB National Strategic Plans and fully integrated into district health services to capitalize on local ownership. Collaboration with other sectors and programs are essential to engage communities and reach specific populations.
- **Patient-Centered Care**  
Patients should not be treated as passive recipients but as partners in their access to services and treatment. Patient centered care is an aspect of quality care.
- **Evidence Based**  
The Initiative promotes the implementation of evidence-based interventions and collection of key performance indicators, taking into account delivery services and patients' acceptability.

## Stages

The systematic approach follows three stages: 'Assess and Prioritize', 'Implement at District Level' and 'Build Evidence' – in order to develop, implement and measure impact of FTMP interventions.



**KNCV Tuberculosis Foundation** is the world's leading TB expert agency. Established in 1903, KNCV delivers evidence for policy and technical assistance for impact in TB care and prevention worldwide.

## How to contact us:

### FTMP Contact persons:

Marleen Heus or  
Christiaan Mulder

### Tel:

+31 70 427 09 79 or  
+31 70 750 84 43

### E-mail:

marleen.heus@kncvtbc.org or  
christiaan.mulder@kncvtbc.org

**Web:** www.kncvtbc.org

## Results

Applying the FTMP Framework should lead to measurable results such as:

- increased country FTMP capacity at the national and sub-national levels,
- implemented FTMP plans at country and district level and increased access to quality diagnosis and care. Taken together, these activities should have the maximal impact at the district level on improved case notification and treatment outcomes.

