



**Together  
we can  
end TB**

# Available Technical Assistant Package

Presenter: Dr. Mansa Mbenga

Title: Team Lead – Treatment and Care

# KNCV AROUND THE WORLD

## GLOBAL OFFICE:

- 01 The Netherlands

## BRANCH OFFICES:

- 02 Philippines
- 03 Vietnam
- 04 Kazakhstan (regional office)
- 05 Ethiopia
- 06 Nigeria
- 07 Tanzania

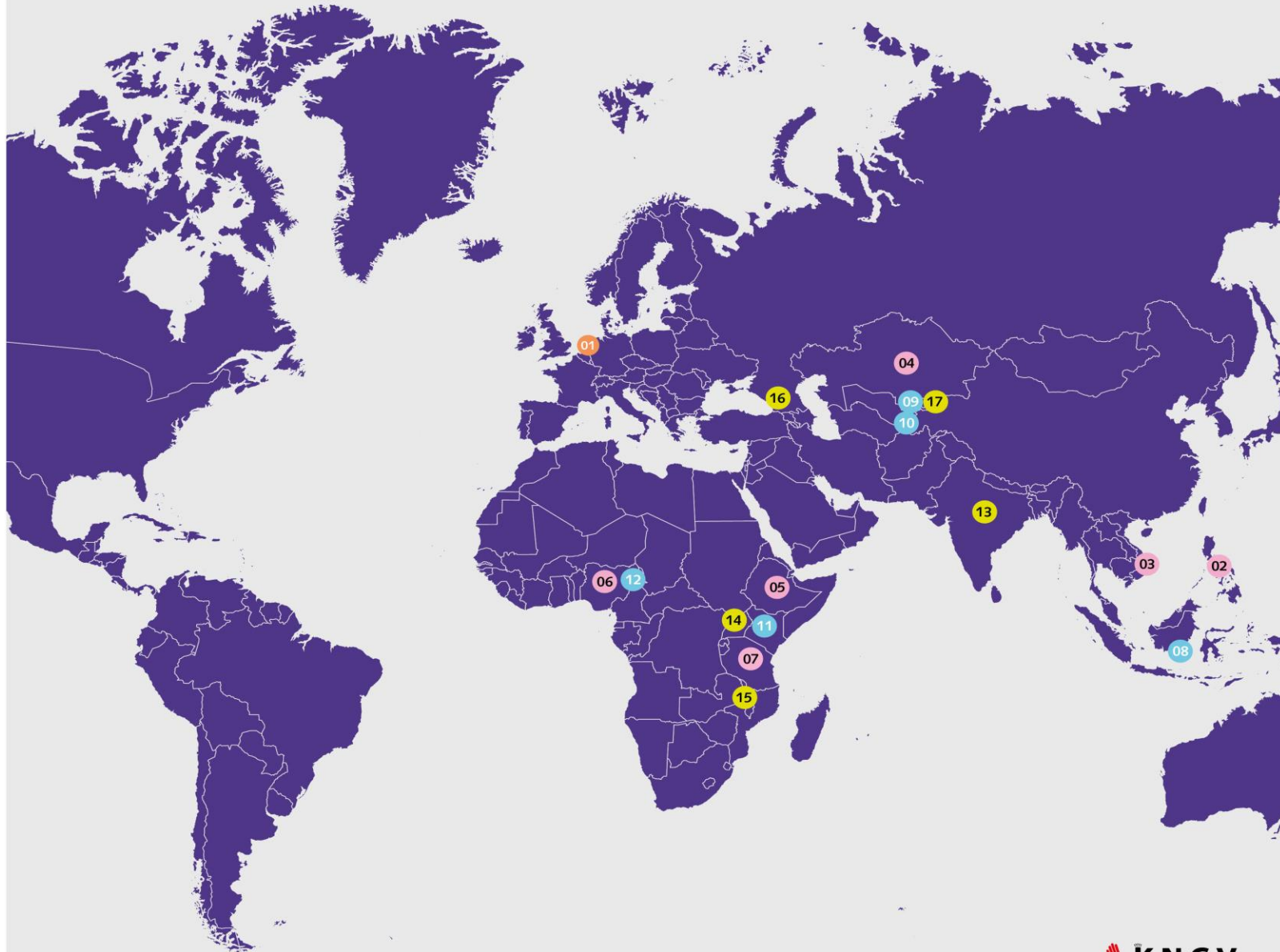
## KNCV

## NATIONAL ENTITIES

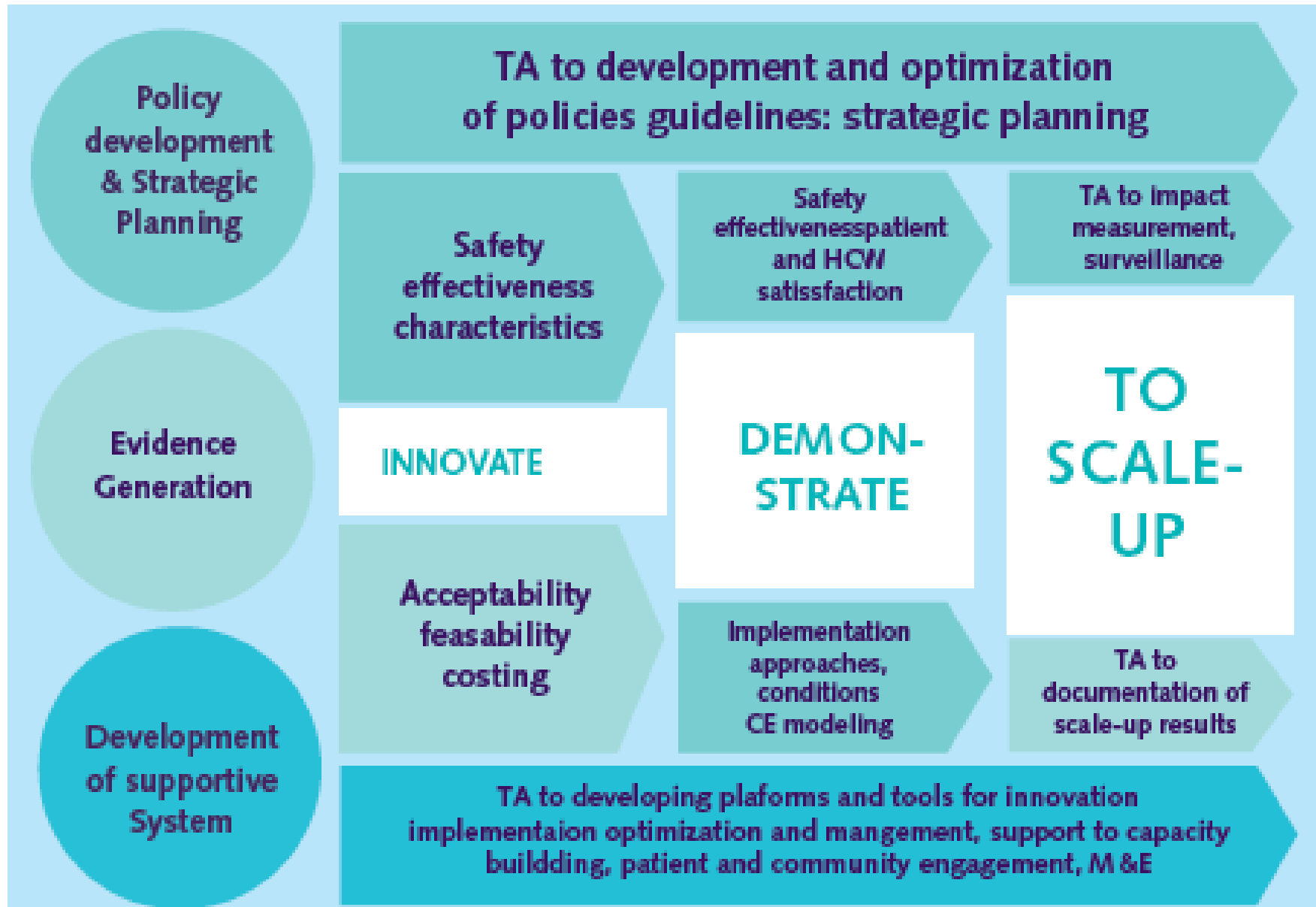
- 08 Indonesia
- 09 Kyrgyzstan
- 10 Tajikistan
- 11 Kenya
- 12 Nigeria

## ADDITIONAL COUNTRIES with international KNCV- Global staff outside EU:

- 13 India
- 14 Uganda
- 15 Malawi
- 16 Georgia
- 17 Kyrgyzstan



# Innovation at the heart of KNCV



# TA Package

Package	Topics	Activities/training modules	Implementation tools	Audience/Mode of delivery
Preparatory steps	Situational assessment, planning, and resource mobilizations	<ul style="list-style-type: none"> <li>• <b>Participatory assessment of current management of DR-TB, including care seeking and the availability of relevant services</b></li> <li>• <b>Implementation planning</b></li> <li>• <b>Review of costed plans</b></li> <li>• <b>TA for resource mobilization</b></li> </ul>	<ul style="list-style-type: none"> <li>• Assessment checklists and planning tool for planning programmatic introduction and scale-up of new DR-TB regimens</li> <li>• Costing checklists for DR-TB programming</li> <li>• People-Centered Framework (PCF) and Patient Pathway Analysis (PPA) methodology</li> </ul>	<p><i>Audience</i> NTPs, partners, representatives of affected Communities</p> <p><i>Mode of delivery</i> Facilitated self-assessment, combination of in person workshops, with online remote TA</p>
A	Preparation of tools and materials for the introduction and/or scale-up of clinical management with shorter regimens and complementary treatment regimens	<ul style="list-style-type: none"> <li>• <b>Review and update national DR-TB guidelines</b></li> <li>• <b>Adjustment of guidelines, job aids, and training curricula and materials</b></li> <li>• <b>Capacity building for clinical management, including comorbidities</b></li> <li>• <b>Design of back-up consultation and</b></li> <li>• <b>referral system for health workers involved in clinical management of people with DR-TB (hub and spoke, facilitated by mobile /e-health solutions as appropriate)</b></li> </ul>	<ul style="list-style-type: none"> <li>• Generic clinical guide for programmatic introduction of BPAL/M regimens (to be adjusted to fit country's needs)</li> <li>• Frequently asked questions (FAQ) for shorter regimens</li> <li>• Generic training materials (to be adjusted to fit country's needs)</li> <li>• Generic study protocols for evaluation of practical implementation of shorter all oral treatment regimens</li> </ul>	<p><i>Audience</i> NTP managers and staff, clinicians, DR-TB expert committee (e.g. Consilium) members, nurses, NTP partners, stakeholders and representatives from affected communities</p> <p><i>Mode of delivery</i> Combination of in-person workshops, in-country capacity building and on the job support, and online remote TA and backstopping</p>

# TA Package

Package	Topics	Activities/training modules	Implementation tools	Audience/Mode of delivery
B	Laboratory strengthening	<ul style="list-style-type: none"> <li>• <b>Expansion of FQ testing for people with DR-TB</b></li> <li>• <b>Capacity building for phenotypic testing for resistance against Bdq, Lzd, Cfz, and Dlm/Pa</b></li> <li>• <b>Design and supporting the implementation of transportation network and dashboard solutions to shorten turnaround time (TAT) and availability of result reports for providers and patients</b></li> <li>• <b>Support planning, management and implementation of calibration, maintenance, and repairs of the laboratory equipment</b></li> <li>• <b>Technical assistance on internal and external quality assurance for chemistry and hematological laboratory tests</b></li> </ul>	<ul style="list-style-type: none"> <li>• Laboratory assessment and planning tool</li> <li>• Generic training materials</li> <li>• Establish connections with EQA providing entities</li> </ul>	<p><i>Audience</i> Laboratory managers, laboratory doctors, technicians, support staff, and clinicians</p> <p><i>Mode of delivery</i> Combination of in-person workshops, in-country capacity building and on the job support, and online remote TA and backstopping</p>

# TA Package

Package	Topics	Activities/training modules	Implementation tools	Audience/Mode of delivery
C	Strengthening of aDSM	<ul style="list-style-type: none"> <li>• <b>Assessment of existing Pharmacovigilance and/or aDSM system</b></li> <li>• <b>Adjustment of monitoring and management of adverse event</b></li> <li>• <b>Adjustment of paper/electronic surveillance system</b></li> <li>• <b>Training, mentoring, and supportive supervisions (hub and spoke system and referral)</b></li> </ul>	<ul style="list-style-type: none"> <li>• Assessment checklist and planning tool to evaluate the aDSM framework, and adverse event recording and reporting</li> <li>• Generic clinical guide</li> <li>• Generic training materials and SOPs for Lactate testing, use of Mobile ECG (KardiaMobile), tests for PN and optic neuritis</li> </ul>	<p><i>Audience</i> NTP, PV department MOH, representatives from affected communities, doctors, nurses, patient supporters</p> <p><i>Mode of delivery</i> Combination of in-person workshops, in-country capacity building and on the job support, and online remote TA and backstopping</p>
D	Stigma reduction and people centered care  Digital Health Strategy for TA	<ul style="list-style-type: none"> <li>• <b>Capacity building for psychosocial support to patients and their families, patient health education and support package</b></li> <li>• <b>Treatment administration options such as VOT and community-based supported</b></li> <li>• <b>Strengthening of collaboration with CSOs</b></li> </ul>	<ul style="list-style-type: none"> <li>• Engage stakeholder's framework</li> <li>• Digital Tools</li> <li>• Digital Health Activities Framework</li> <li>• Intervention Analysis Framework</li> </ul>	<p><i>Audience</i> Counselors, clinicians, nurses, community health care workers, treatment supporters, representatives of affected communities, and CSO</p> <p><i>Mode of delivery</i> Combination of in-person workshops, in-country capacity building and on the job support, and online remote TA and backstopping</p>

# TA Package

Package	Topics	Activities/training modules	Implementation tools	Audience/Mode of delivery
E	Strengthening people centered care in collaboration with CSOs and representatives of affected communities	<ul style="list-style-type: none"> <li>• <b>Adjustment of information materials for patients, affected communities</b></li> <li>• <b>Capacity building for demand creation and CSO roles for delivery of comprehensive care (as defined by the country); including psycho/social support.</b></li> <li>• <b>Assessment and planning for situation specific optimal use of digital health to facilitate people centered DR-TB care</b></li> <li>• <b>Stigma baseline assessment and adaptation of the “Allies” approach for the country, TOT and technical assistance to implementation at health Facilities</b></li> </ul>	<ul style="list-style-type: none"> <li>• Template information materials</li> <li>• Template training materials for community roles in the delivery of comprehensive care</li> <li>• Digital health intervention analysis and activities framework</li> <li>• Digital adherence tools (VOT, pillbox etc.), generic materials, implementation plans, and costing checklist</li> <li>• TB stigma measurement guidance</li> <li>• Allies Approaches for stigma reduction in health facilities</li> </ul>	<p><i>Audience</i> Counselors, clinicians, nurses, community health care workers, treatment supporters, and representatives of affected communities and CSO</p> <p><i>Mode of delivery</i> Combination of in-person workshops, in-country capacity building and on the job support, and online remote TA and backstopping</p>
F	Uninterrupted quality assured supplies	<b>Procurement and supply chain management</b>	<ul style="list-style-type: none"> <li>• PSCM system assessment tool</li> <li>• Quan TB</li> </ul>	<p><i>Audience</i> NTP managers, support staff, and stakeholders</p> <p><i>Mode of delivery</i> Procurement and supply unit workshop, and remote support</p>

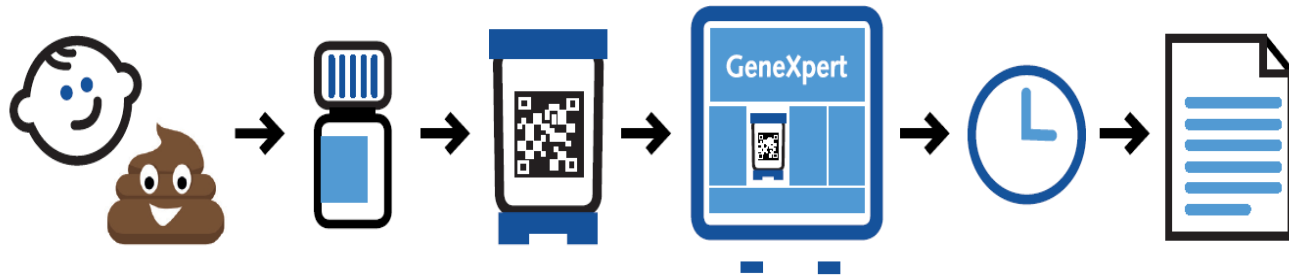
# TA Package

Package	Topics	Activities/training modules	Implementation tools	Audience/Mode of delivery
G with elements Of other packages (e.g. A, C, D etc.)	Decentralization of care with treatment progress and safety monitoring and management	<ul style="list-style-type: none"> <li>• <b>Capacity building for clinical management, including comorbidities</b></li> <li>• <b>Strengthening clinical laboratory monitoring in PHC level</b></li> <li>• <b>Technical assistance to decentralized data use for continuous improvement of care</b></li> <li>• <b>Conduct clinical (e-)trainings</b></li> <li>• <b>Establish a referral process and periodic clinical case discussion</b></li> </ul>	<ul style="list-style-type: none"> <li>• (e)training materials</li> <li>• Examples of referral processes SOPs to streamline and document periodic clinical case discussion</li> <li>• Digital Adherence Tools (DAT) with implementation tools (see under D)</li> <li>• SOPs for implementation of Mobile ECG monitoring tool (KardiaMobile)</li> </ul>	<p><i>Audience</i> NTP, clinicians, TB expert committee or Consilium members, nurses, community health care workers, and treatment supporters</p> <p><i>Mode of delivery</i> Face to face/online/in-country presence</p>
H	Monitoring and Evaluation	<ul style="list-style-type: none"> <li>• <b>Technical assistance to review and support optimized data collection tools and indicators for enhanced data quality and use</b></li> <li>• <b>DR-TB cohort review and analysis, STTA and/or in-country LTTA for on-the-job training, and initial monitoring of implementation</b></li> </ul>	<ul style="list-style-type: none"> <li>• Health Information System (HIS) Assessment Framework</li> <li>• Generic data collection tools for situation specific adaptation</li> <li>• Monthly/Quarterly interim cohort assessment methods- MICA/QICA</li> <li>• Generic training materials</li> </ul>	<p><i>Audience</i> NTP, DR-TB focal points, data managers, data collection team, and representatives of affected communities</p> <p><i>Mode of delivery</i> Face to face/online/in country presence</p>



# TB in children and adolescents

- TA for programmatic introduction/scale-up of stool testing



- Benchmarking tool for self-assessment and planning updated and included in WHO roadmap for TB in children and adolescent
- TA to support countries' self-assessment the management of TB in children and adolescents and planning for full implementation of the latest WHO guidelines

# Available tools and links to them

- **KNCV TA Package** [KNCV-TA-package.pdf](https://www.kncvtbc.org/KNCV-TA-package.pdf) ([kncvtbc.org](https://www.kncvtbc.org))
- [KNCV Self-assessment checklist and planning tool - KNCV - Tuberculosefonds](https://www.kncvtbc.org/KNCV-Self-assessment-checklist-and-planning-tool-KNCV-Tuberculosefonds.pdf) ([kncvtbc.org](https://www.kncvtbc.org))
- <https://www.kncvtbc.org/kb/kncv-benchmarking-tool-for-childhood-tb-policies-practice-and-planning/>
- <https://www.kncvtbc.org/en/2024/04/22/shorter-dr-tb-treatment-regimens-and-cardiac-monitoring/>

Clinical guide for the programmatic introduction of the BPALM/BPAL treatment regimens

CLINICAL GUIDE FOR THE PROGRAMMATIC INTRODUCTION OF THE BPALM/BPAL TREATMENT REGIMENS

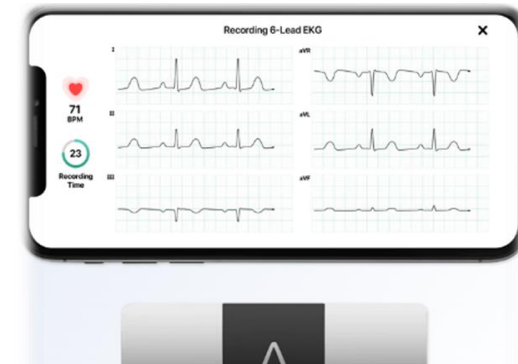
Version 1, March 2023

LIFTB

KOICA  
Korea International Cooperation Agency

TB Alliance

KNCV  
TUBERCULOSIS FOUNDATION



**KNCV**  
TB | PLUS

# Acknowledgement

Jense van der Wal , Fraser Wares, Veriko Mirtskhulava, Lilian Polderman, Lillian Mtei, DonoDigna Sumari, Kristian van Kalmthout, Sara Keller, Agnes Gebhard, Andrii Slyzkyi

Unitaid and Consortium partners

